

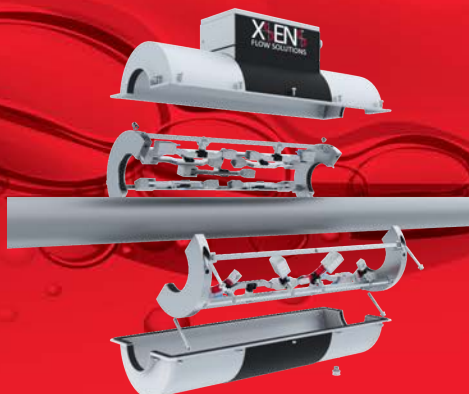
XACT™

LIQUID FLOW RATE & FRACTION METER

XSENS®

FLOW SOLUTIONS

	Item	Requirement	Range	
General	1	Line size	1.5" to 36" and higher	
	2	Line Schedule	Any	
	3	Pipe Class	Any	
	4	Pipe Material	Carbon Steel, SS316, Duplex (others)	
	5	Hazardous Area Protection	Atex, IECEx Zone 1 and 2	
	6	Explosion Group / Gas group	IIB	
	7	Temperature class	T3	
	8	Max Ambient temperature	60°C	
	9	Ingress Protection	IP 66 (higher on request)	
Process Conditions	10	Fluid	Hydrocarbon / Water / Liquid mixture	
	11	Phase	Liquid	
	12	Corrosive / Erosive	Can handle both due to clamp-on design	
	13	Case	Min	Max
	14	Flowrate m/s	0.1	40
	15	Density	No limit	No limit
	16	Design pressure	No limit	No limit
	17	Design Temperature	-20 deg C	100 deg C (higher as option)
	18	Viscosity	Range from water to heavy bunker oil	
Sensor	19	Sensor Type	Ultrasonic non-intrusive (clamp-on type) Up to six pairs (redundancy)	
	20	Measurement Principle	Ultrasonic Guided Wave Transit Time & Time Of Flight	
	21	Housing Sensor Material	SS316 / Aluminium	
	22	Cable from sensor to transmitter	Armored, flame retardant type (xx meters length)	
	23	Accuracy flow	+/- 1% of flow (add +/-0,01 m/s)	
	24	WLR (Water Liquid Ratio) range	0-100% WLR	
	25	Accuracy WLR (Water liquid Ratio)	+/- 1% abs.	
	26	Turndown ratio	400:1	
	27	Removable Assembly	Yes	
	28	Electrical Connection	4-20mA / Modbus (WiFi, Canbus, Profibus and other on request)	
	29	Upstream Straight Length	2-5D (target)	
	30	Downstream Straight Length	2-5D (target)	
	31	Flow Straighteners	Not required	
	32	Static Mixer	Not required	
Transmitter	33	Housing Material	SS316 / Aluminium	
	34	Calibration	0 - 100%	
	35	Electrical Connection	To custom specifications	
	36	Power Supply	12-24 VDC (external power, or other) Typical 9,5Watt and 11 Watt at start up	
	37	Output Signal	Modbus serial connected to flow computer via RS-485 /4-20mA (others on request)	
	38	Mounting	Integrated in sensor	
Options	39	Pressure Transmitter	NA	
	40	Temperature Transmitter	2*PT 100 elements included	
	41	Flow Computer	NA	
	42	Local Display	Optional	
	43	Mounting Kit	Included	
	44	Weight	From 25 kg to 150 kg depending on size	
	45	Dimensions	See GA drawings from Xsens	



WWW.XSENSFLOW.COM

XSENS AS
Godviksvingene 127
5179 Godvik
NORWAY